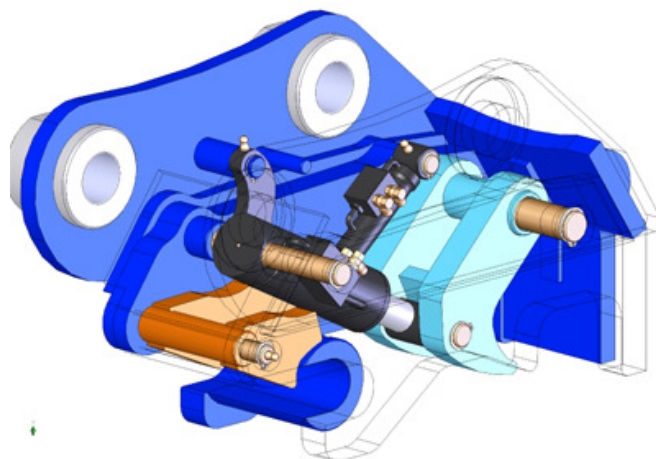


**COMPANY DETAIL:**

ACTIVITY	AREA	CONTENTS
REGISTRATION	CLASSROOM	Inspection of licence
INTRODUCTION	TRAINING MACHINE	Viewing of coupler. Identification of coupler parts. Explanation of purpose and use.
THEORY	CLASSROOM	Viewing of training video. Correct use of coupler with referral to manual. Lifting Eye. Maintenance.
PRACTICAL	TRAINING MACHINE	Location of stickers. Instruction in pickup and release. Connection test. Risk identification. Use of lifting eye. Maintenance.
SAFETY	CLASSROOM	Risk identification. Points to check.
SUMMARY	CLASSROOM	Recap on procedures. Important safety points.





TRAINING PROCEDURE FOR HYDRAULIC COUPLER OPERATION

TRAINEE

TRAINER

EMPLOYEEER -
NAME & ADDRESS

DATE OF
TRAINING

TRAINING
LOCTION

1: EXCAVATOR DRIVING LICENSE

Ask trainee to show a current valid driving license before starting training.

Signature of Trainee

Signature of Trainer

Date

2: INTRODUCTION

Show the trainee the coupler. Explain its purpose i.e. for quick change over of attachments.

Signature of Trainee

Signature of Trainer

Date

3: THEORY

The trainee must given the appropriate user manual and the following sections explained.

BUCKET OR ATTACHMENT PICKUP
CONNECTION TESTS
BUCKET OR ATTACHMENT RELEASE
THE USE OF THE LIFTING EYE
DAILY MAINTENANCE

Signature of Trainee

Signature of Trainer

Date

4: PRACTICAL

The trainee must be shown the location of all safety stickers and perform the following operations.

BUCKET OR ATTACHMENT PICKUP
CONNECTION TESTS
BUCKET OR ATTACHMENT RELEASE
THE USE OF THE LIFTING EYE
DAILY MAINTENANCE

Signature of Trainee

Signature of Trainer

Date

